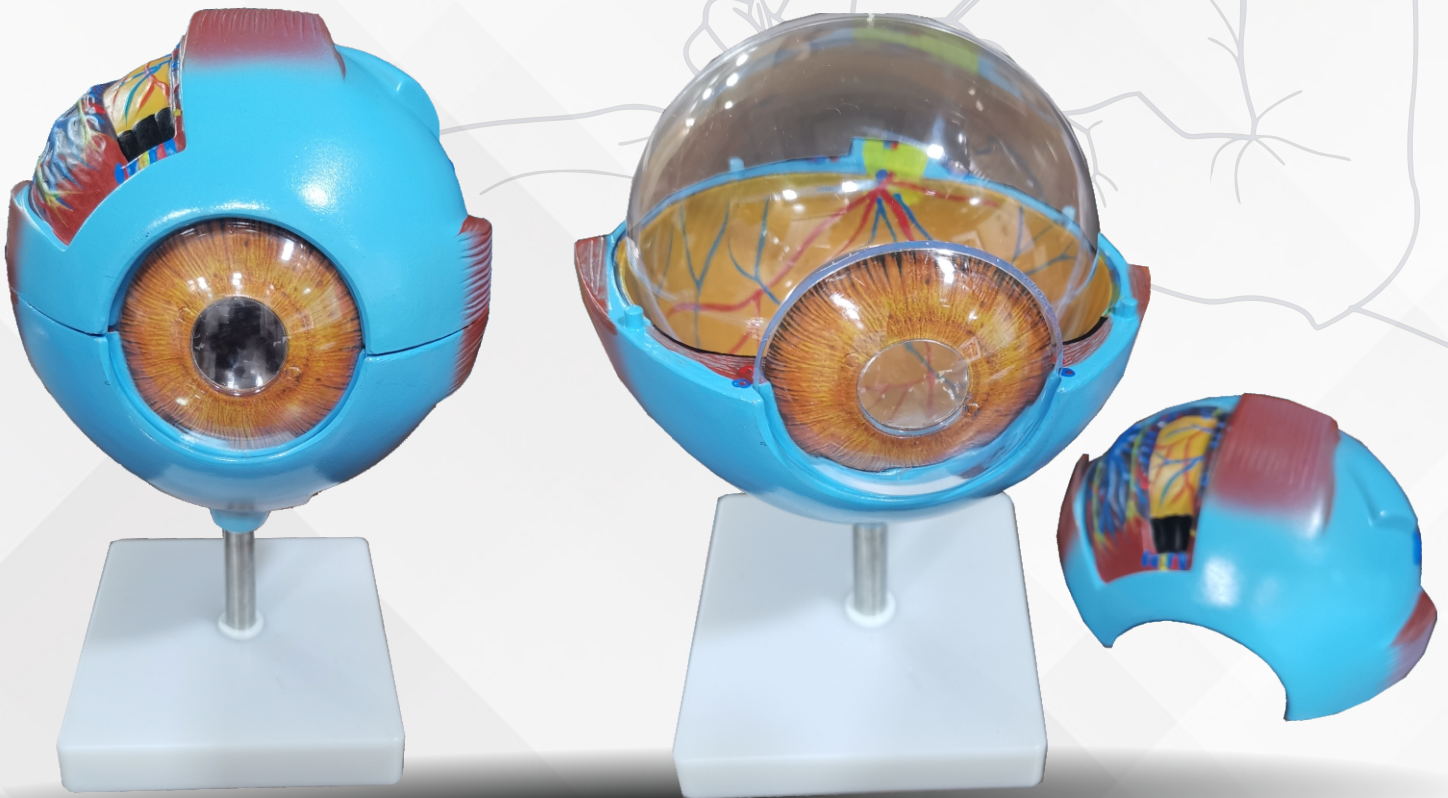


MODEL-EYES

FOR EDUCATION AND DEMONSTRATION



FEATURES

- The different parts of the eyeball model are detachable to show the following structures.
- Tunica external: showing cornea and sclera with attachments of ocular muscles and optic nerve.
- Tunica media: showing the iris, the ciliary body and the chorioid.
- Tunica internal is retina.
- Refraction media: showing the lens and the vitreous body.
- Times enlarged, On stand.
- Model eyes to demonstrate or educate students or patients.
- Made with high quality plastic.
- Vivid colours makes easy to understand parts.
- Available different models.





+91 9302 778 762
+91 9111 429 222



export@mediequipbazar.com
info@mediequipbazar.com



+91 9302 778 762
+91 9111 429 222



MANUFACTURING UNIT

Plot No. 23-B, Badiyakhedi
Industrial Park Phase I,
Badiyakhedi, Sehore, M.P.,
India - 466 001



MANUFACTURING UNIT

Plot No.-40, KI Ansal
Green, Kolar Road
Bhopal-462042



MANUFACTURING UNIT

Plot No. - 79, Commercial
Shade, Near D-Mart,
Bhopal, 462042



www.mediequipbazar.com



REGISTERED OFFICE

MEX ENTERPRISES

ISO 13485 :2016 & ISO 9001 :2015 Certified Company

Plot No. 50/1B-50/2B, Rajharsh Colony,
Near CI Square Shopping Mall, Kolar Road,
Bhopal, M.P.-462042

SALES OFFICE

MEX ENTERPRISES

ISO 13485 :2016 & ISO 9001 :2015 Certified Company

Building Name - Classic's, T-1895/1,
Upper Ridge Road, Karol Bagh,
New Delhi - 110005

SALES OFFICE

MEX ENTERPRISES

ISO 13485 :2016 & ISO 9001 :2015 Certified Company

House No.-10/806, Shivanand Nagar,
Jhanda Chowk, Raipur CG-492008